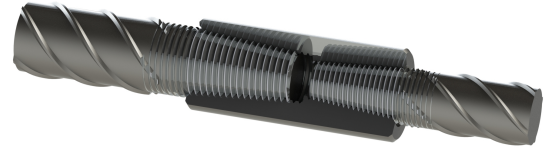


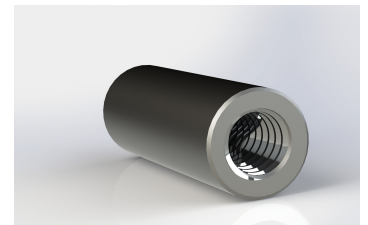
Transition Taper Coupler

The TC series of coupler is designed for join any bar to bar connection with different sizes of rebar and one bar can be rotated. The coupler has machined taper threads at both ends connecting two ends of rebar to make a mechanical splice. This simplifies rebar splicing in areas where steel congestion makes it difficult for long lap splices. The taper thread design allows for quick alignment and engagement of the bar within the coupler.



Features and Benefits

- Can be used in a wide variety of global rebar grades and deformation patterns
- Meets or exceeds international building codes including ACI 318 Type 1 & Type 2, BS8110, DIN1045, Hong Kong Building Department Type 2 and many others
- Taper design allows for quick alignment and eliminates cross threading
- Installs quickly with taper thread
- Slim design frees up space in congested areas
- “Jump” sizes coupler can be provided.



Typical Applications

- Column Bar Splicing
- Beam Bar Splicing
- Future Extensions

Part Number	Metric Rebar Size	L1 (in)	L1 (mm)	D1 (in)	D1 (mm)	BD1 (in)	BD1 (mm)	BD2 (in)	BD2 (mm)	BG1 (in)	BG1 (mm)	Weight (lbs)	Weight (kg)
TC2520	25mm-20mm	2.87	73	1.46	37	1.47	37	1.12	29	.51	13	1.0	.45
TC3225	32mm-25mm	3.27	83	1.77	45	1.47	37	1.46	37	.51	13	1.7	.77
TC4032	40mm-32mm	3.86	98	2.25	57	1.71	43	1.46	37	.71	18	2.9	1.31
TC5040	50mm-40mm	4.80	122	2.75	70	2.40	61	1.71	43	.71	18	6.4	2.90

